

CULVER AIRCRAFT CORPORATION
WICHITA, KANSAS

Service Memorandum

No. 8

Subject: Lock Pin Revision

To Cadet Owners: Serials 102 to 225

1. To insure a definite locking of the retractable gear in the down position, you are requested to comply with the instructions herein listed in this bulletin. Neglect may result in possible accident and serious damage.

2. A kit containing two new lock pins and a sketch showing the necessary details of the change will be forwarded, at cost, soon after the issuing of this bulletin.

3. Procedure: Elevate the Cadet in the following manner:
Raise tail and place wooden horses under fuselage just forward of tail wheel spring. Place 50 lbs. of ballast (sand bags) on stabilizer root. In same manner, raise each wing and insert horses outboard of the gear stations so that weight of plane rests on wing spars. Use suitable padding on horses.

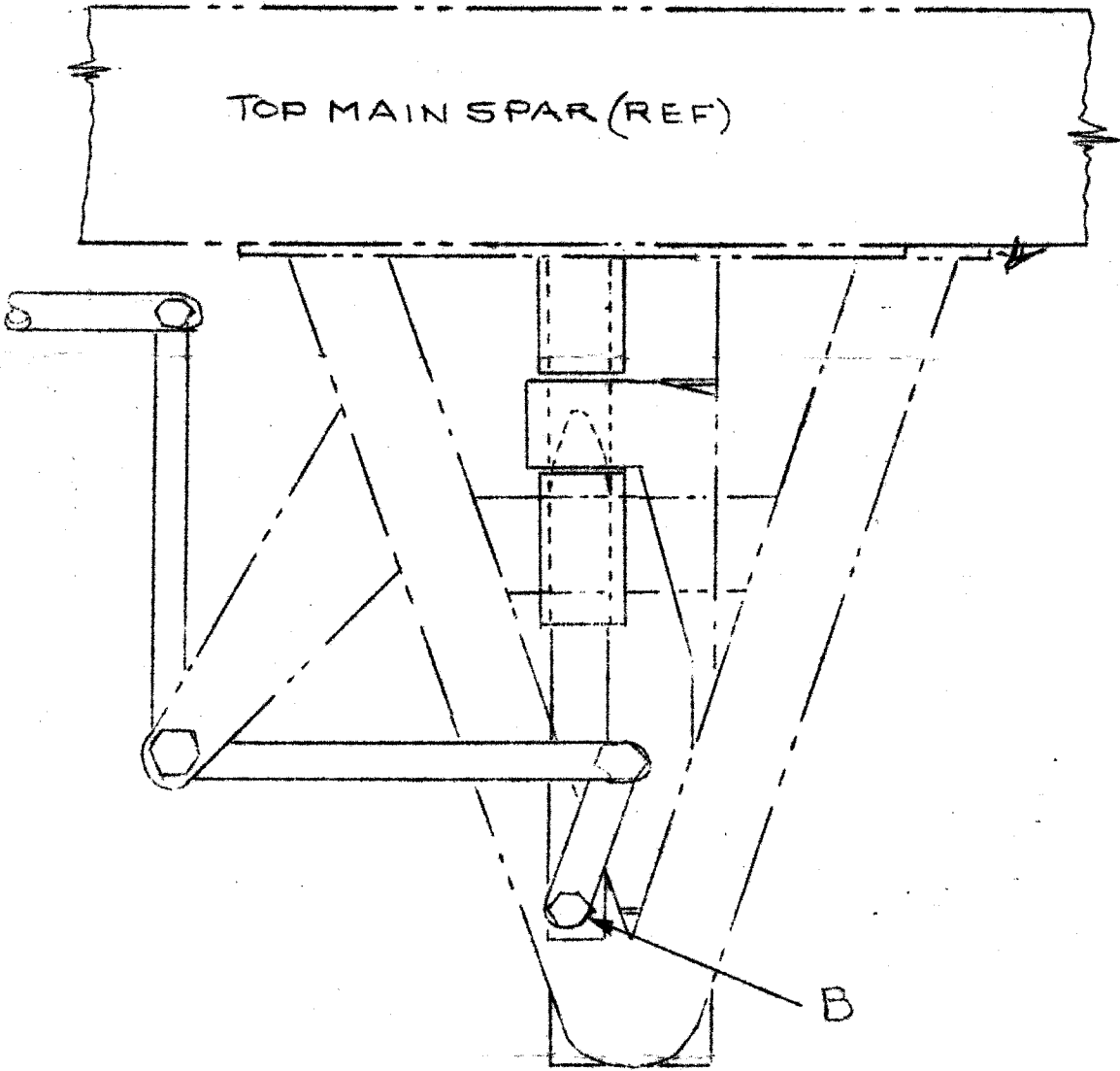
Leave gear in down position and shift lock lever to raised position. Remove cover plates around gear attachment to permit access for the change. Remove bolt, nut, cotter, and washer at point B detaching pin from toggles as shown in sketch A. Insert new pins in right and left gears in same manner as originals. Replace bolt, nut, cotter, and washers. Leaving Cadet on horses, test lock control for correct operation.

4. Appropriate entry of compliance with this memorandum is to be made in the Aircraft Log Books by the mechanic doing the work.

Engineering Department

C. M. Jamieson
C. M. Jamieson,
Assistant Chief Engineer

Approved, June 19, 1941



LEFT
SHOWN.

SKETCH A
NOT TO SCALE